

# Seaward Primetest 200

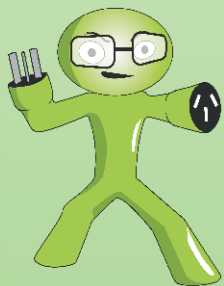


The Seaward PAC3760 is a next generation PAT tester. It conducts earth bond, insulation and polarity tests, as well as Leakage Current Tests for Class I and Class II appliances and leads.

The PAC3760 powers up appliances and leads for Leakage Current Tests at 5mA Pass/Fail for Class I and 1mA Pass/Fail for Class II

To further improve the level of safety testing, the PAC3760's earth bond test is set at 10 Amps. This is beyond a multimeter's continuity test and is capable of fusing a poor earth held by a couple of strands.

The PAC3760's ease of use and smart automatic testing features make it simply the best solution for all manual testing and tagging applications, whether a Competent Person testing their own equipment through to the seasoned professional contractor.



# Seaward PrimeTest 200: The Complete AS3760 PATs & RCD Testing Solution

The Prime Test 200 provides earth continuity, insulation resistance, leakage current testing and RCD testing according to the requirements of AS/NZS 3760:2003.

For those looking to get more out of their appliance tester, the Prime Test 200 also includes basic DMM measurements such as continuity and voltage measurements. The PT200 is the ideal multi-tester.

Seaward	Features
	PrimeTest 200
Display	Bright LCD
Indication	Pass/Fail, Bar Graph, Reading
Operation	Rotary Switch
Leads	Earth Bond, IEC, Probes
Carry Case	Deluxe Padded
Dimensions(LxWxH)	265 x 110 x 55mm
Weight	920g

Seaward	Tests Performed
	PrimeTest 200
Lead & Socket Polarity	Yes
Earth Continuity & Continuity	200mA, 1ohm
Insulation Resistance	500V DC, 1Mohm
Class I Leakage Current	5mA
Class II Leakage Current	1mA
MOV Devices Class I Leakage Current	5mA
MOV Devices Class II Leakage Current	1mA
Cord Extension Sets Leakage Current	1mA
RCD Test, 30mA RMS	<300ms
Voltage	250V AC/DC to 400Hz

Seaward	Results Displayed
	PrimeTest 200
Polarity	Pass/Fail
Earth Continuity	Pass/Fail
Insulation Resistance	Pass/Fail
Class I & II Leakage	Pass/Fail
RCD Test	Pass/Fail

