

# FASTtag Appliance Testing Software

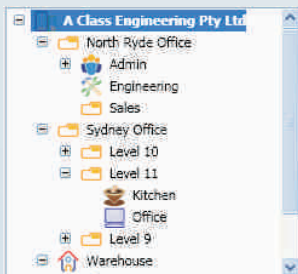
*FASTtag* is the complete solution to document your electrical test and tag – saving you time and keeping an accurate record of all your tests.

- Easy to use
- Best value in test and tag software
- Reminders – items due for retest
- Latest technology
- Import from Excel and Trio Pro Logger
- Automatically print tags
- Complies with AS3760

## Fast Data Entry

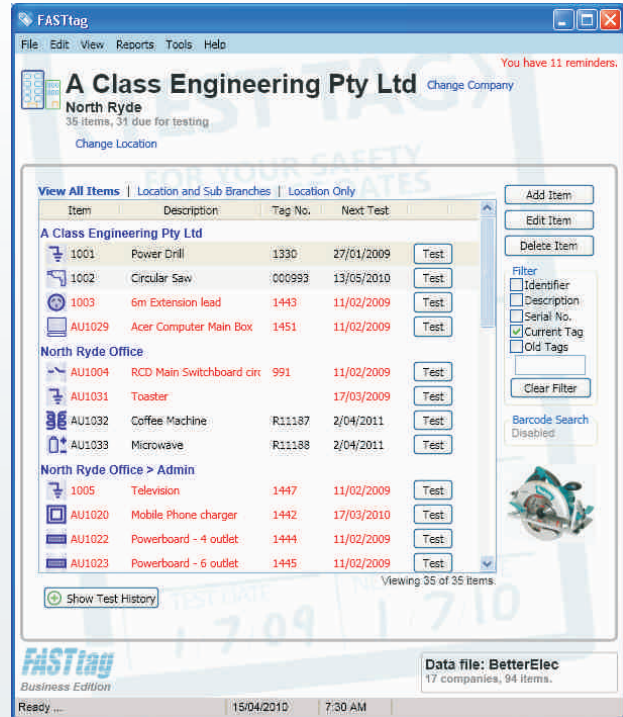
With *FASTtag*, adding test results for new appliances is quick and easy. Just click the Add Item button and as you type the item description, *FASTtag*'s Predictive Text automatically suggests similar matching descriptions you have used previously. Less typing and a massive time saving!

You can also use abbreviations to quickly add commonly used appliance descriptions. As you add each appliance you can choose from the built-in equipment types, such as Class I, Class II, Extension Lead and Powerboard.



Locations can be defined in a tree type view, making it easy to arrange your appliance information as applicable for each site. Each Location has a default test interval, which is

automatically set as you add appliances.



## Easy Retest

When it comes to retest – the appliance information is already there. Quickly locate the item with the filter tool or barcode scanner, then click the test button.

## Complete Test History

*FASTtag* maintains a record of all tests, not just the most recent test, including the person conducting the test and equipment used. This meets OH & S regulations and gives you a complete audit trail in the event of an incident.

## Automatically Print Tags

With the Tag Printer Option, as you complete each test the tag is printed automatically on your ZPL compatible label printer. Imagine how much time that will save over hand writing the tags!



## Features

**Companies and Locations** – Company details including name, address, contact, email, etc. Flexible location hierarchy to organise appliances.

**Complete Test History** – Record of all tests and tags, over the lifetime of the appliance.

**Predictive Text** – Entry of descriptions is fast and easy with a list of previously used descriptions appearing. Saves time and maintains consistency.

**Abbreviations** – Two or three character abbreviations for commonly used appliances.

**Barcode scanning** – Use a barcode scanner to instantly find appliance information.

**Tag Printer Option** – Print the test tag using any ZPL compatible printer.

**Reminders** – Automatically track and colour code appliances due for re-test, display a summary by company.

**Multiple Appliance Testers** – Record all the details of your test equipment including brand, model and next calibration date.

**Multiple Users / Technicians** – Keep records of the “Competent Person” that performed the test. This is a critical step in electrical test procedures and compliance with OH&S regulations.

**Email Integration** – Use the information recorded in *FASTtag* to quickly create email to your customer.

**Unique Item Identifiers** – If required, force appliance identifiers to be unique, either within the company or across the data file.

**Reporting** – A range of reports are included, which can be filtered by location and date.

**Asset Management** – *FASTtag* also doubles as an asset management tool, recording information such as brand, model, serial number, even a photo.

**Import Wizard** – Easily and quickly read existing appliance and test information from Microsoft Excel.

**Import from Trio Pro Logger** – *FASTtag* understands the format of the Trio csv file, for fast and easy download of test records from the Trio Pro Logger.

**Latest Technology** – *FASTtag* uses the latest technologies from Microsoft, including SQL server, .Net and WPF.

**Supported Platforms** – *FASTtag* is available on all current Microsoft Windows desktop operating systems:  
Windows XP SP2 or later (32-bit)  
Windows Vista (32-bit and 64-bit)  
Windows 7 (32-bit and 64-bit)

### System Requirements

Windows PC with Pentium processor (or equivalent) 200MHz or better  
At least 256MB RAM – Windows XP  
At least 1GB RAM – Windows Vista or Windows 7  
At least 500MB hard disk free

### FREE trial download

[www.aus.com.au/fasttag/fasttag\\_download](http://www.aus.com.au/fasttag/fasttag_download)

Available from:



Portable Appliance Testers



Advanced User Systems Pty Ltd



2 Rudd Street North Ryde NSW 2113, Australia  
Phone: 02 9878 4777, Fax: 02 9878 6951

[www.aus.com.au/fasttag](http://www.aus.com.au/fasttag)