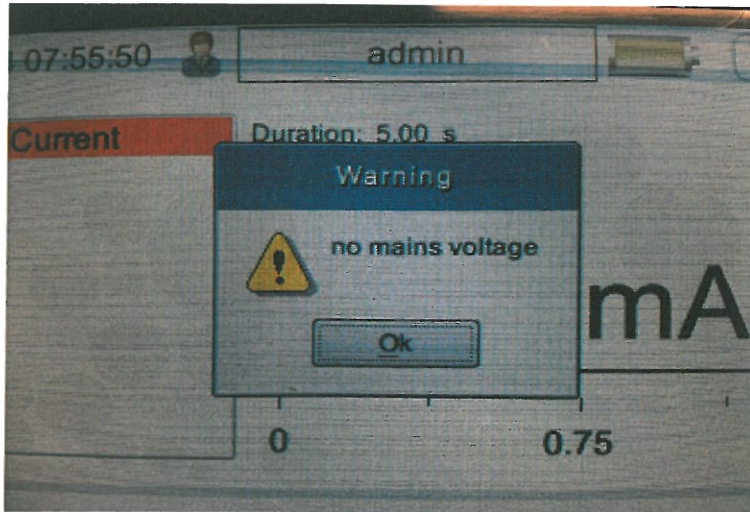


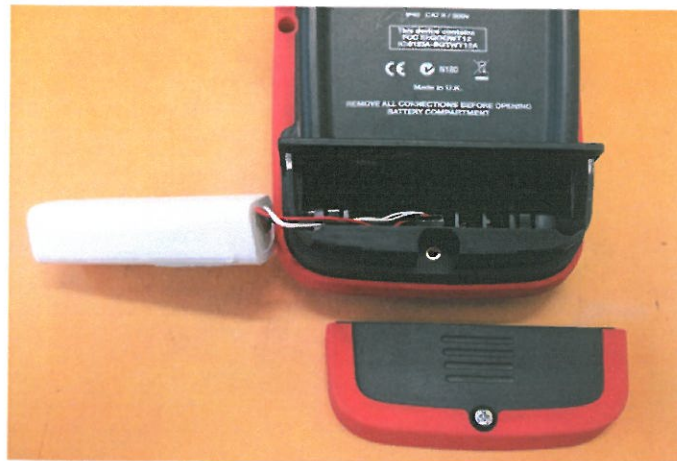
# Seaward Primetest Elite

Replacing MAINS fuses.....

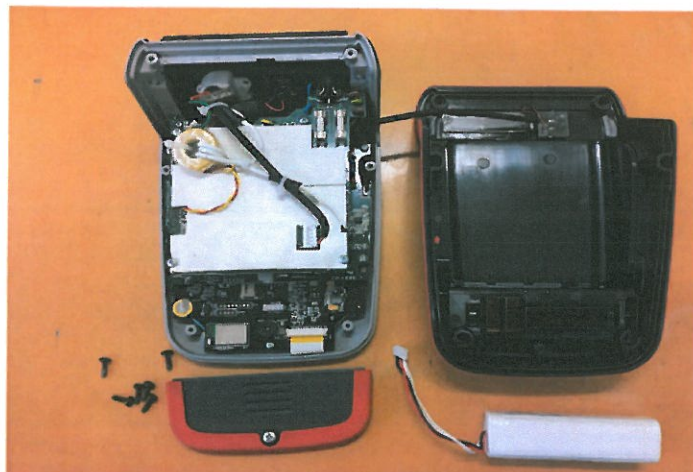
Display when attempting mains powered tests.. (Leakage, RCD)



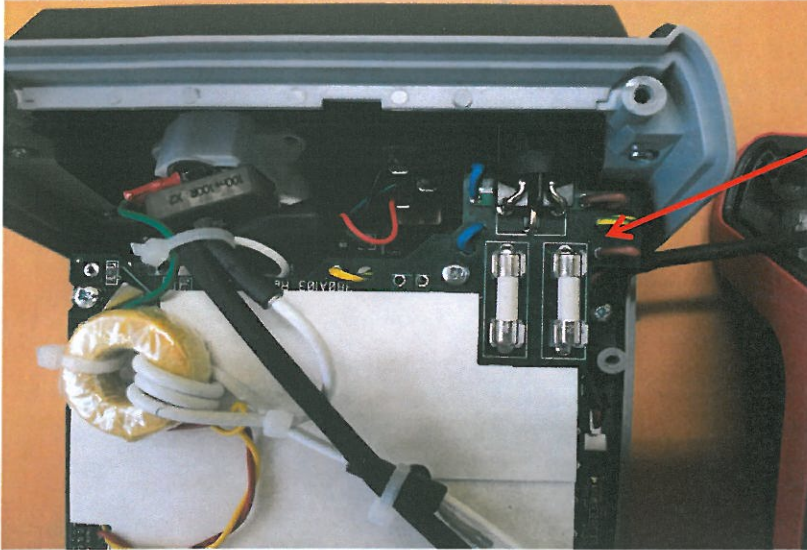
- 1: Remove Battery Cover and battery.
- 2: Remove x6 T20 Torx screws.



- 3: Lift rear cover off unit and fold to one side, as per photo, this will expose the 2 mains fuses.



4: Check and replace any faulty fuse.



x2 16A  
fuses

5: Reassemble in reverse order. Be carefull of camera cable when reassembling.

NOTE: If fuses are both good then the unit has other faults and will need to be returned to Emona for service.